

## Northumberland - Based Events (England)

### Designed for:

The course is designed for Geoscientists, Petrophysicists, Reservoir Engineers and Well Engineers.

Ideally structured for groups working in multi-discipline asset-based teams.

### Duration (days)

1 2 3  
flexible

### Learning Level:

Skills   
Knowledge   
Awareness 

### Faults and Fault Damage Zones, Deltas and Ephemeral Fluvial Systems

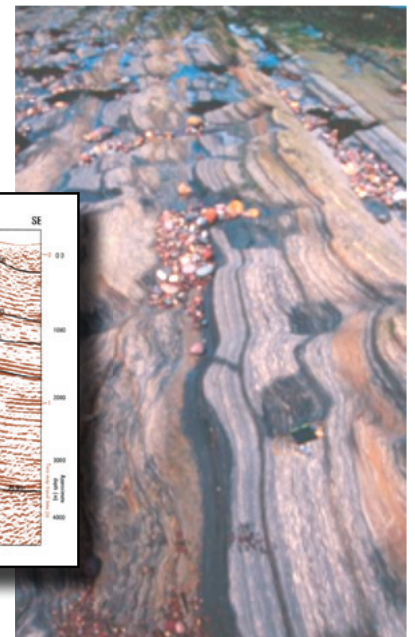
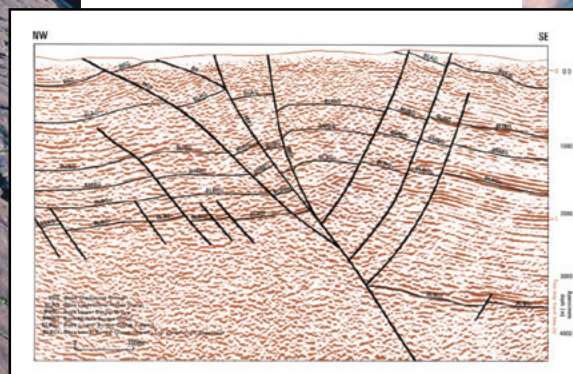
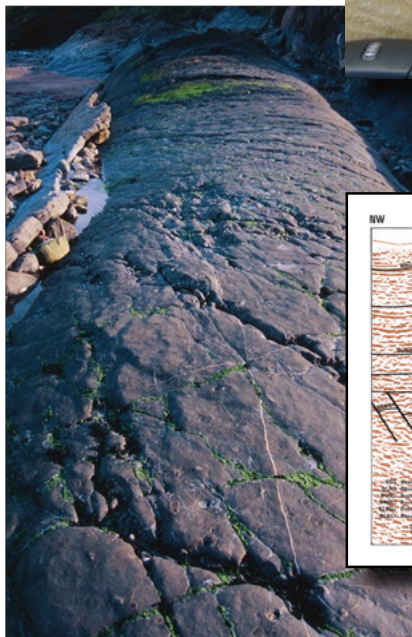
#### What's here?

Well exposed fault systems in heterogeneous clastic rocks.

Fold systems showing fold-fracture relationships.

Fluvio-deltaic environments.

Basin-scale petroleum systems.

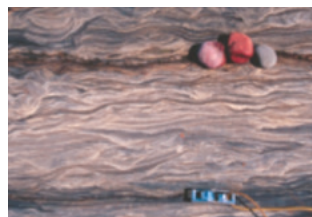


Early Development  
E&P Overview  
Reservoir  
Wells

Business & Risk  
**Open Air**  
Coaching  
Master Class



## Northumberland - Based Events (England) continued



### Access

Mostly coastal sections – limited walking.

### Logistics

Accommodations in Alnwick or Morpeth  
Fly in/out Newcastle or Edinburgh.

### Duration

2 - 3 days, can be combined with  
Yorkshire events.

### Courses available from this series:

Moray Firth-based Events (Scotland)  
Northumberland-based Events (England)  
Yorkshire-based Events (England)  
Derbyshire -based Events (England)  
Dorset-based Events (England)  
Pembrokeshire-based Events (SW Wales)  
Somerset-based Events (England)  
County Clare-based Events (Ireland)  
Annot-based Events (France)  
Provence-based Events (France)  
Tabernas-based Events (Spain)  
Pyrenees-based Events (Spain)  
Utah-based Events (USA)  
East Kentucky-based Events (USA)  
Sicily-based Events (Italy)

### Course Tutors



**Richard Oxlade** MEng

**Main Series tutoring:** Reservoir, Early Development, Master Class (business)

**Industry experience:** over 30 years, commercial, reservoir engineering

**Career background:** BP, AGR and TRACS

**Personal:** Global advisor, business planning & economic analysis



**Mark Bramwell** BSc, PhD

**Main Series tutoring:** Reservoir, Early Development, E&P Overview, Open Air

**Industry experience:** over 25 years, geoscience

**Career background:** Shell, KUFPEC, AGR and TRACS

**Personal:** Programme manager for Early Development Series



**Mark Bentley** PhD

**Main Series tutoring:** Reservoir, E&P Overview, Open Air and Master Class

**Industry experience:** over 25 years, geoscience

**Career background:** Shell, AGR and TRACS

**Personal:** Author 'Reservoir Model Design', SPE and EAGE distinguished lecturer, AGR & TRACS Training director, associate professor Heriot-Watt University



**Jenny Garnham** PhD

**Main Series tutoring:** Reservoir, Open Air

**Industry experience:** over 20 years, petrophysics

**Career background:** Enterprise Oil, AGR and TRACS

**Personal:** Technical author, SPWLA active member, PESGB/SPE