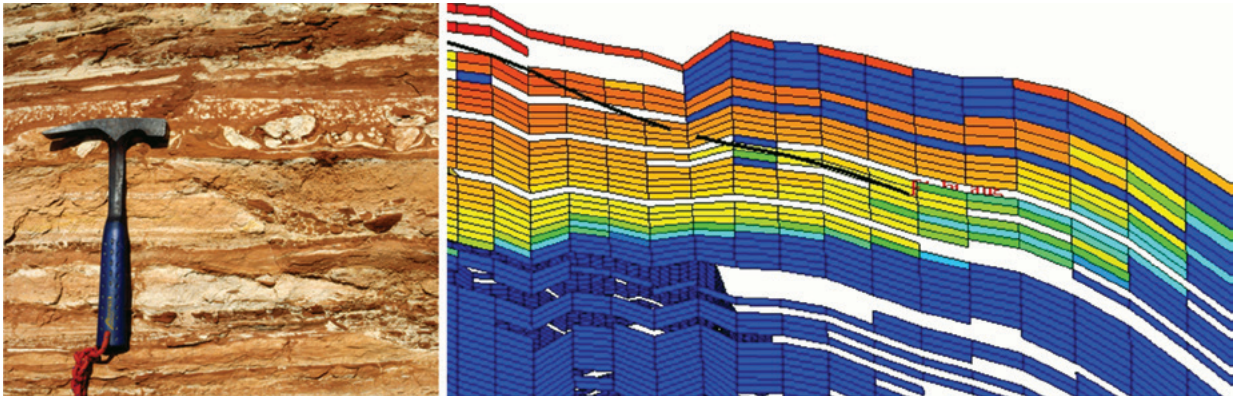


## Reservoir Series

The Reservoir Series includes technical subsurface courses from geophysics through to geology, petrophysics and reservoir engineering.



The reservoir-based programmes are adapted to varying skill levels and are offered as introductory courses within a discipline and as higher-level technical courses for audiences with some experience in their disciplines.

These programmes are also popular as introductory courses for 'other disciplines', for which the technical content is tailored appropriately.

Some of the courses include a component looking at core material, which is optimum if it is tailored to material held by the client company.

Several courses benefit from the inclusion of excursions to rock outcrops which serve as analogues for producing reservoirs. This extends beyond the

geology courses to the engineering courses, and can optionally be led by two tutors – one geoscience-based and the other engineering-based. If the course venue is at a client location, local outcrops may be used for this purpose and the course content will be tailored appropriately. To date this has been carried out in locations in Australia, South Africa, the UK and Germany.

The Reservoir Series courses are delivered by staff and associates from the TRACS reservoir management teams, all of whom are practising professionals with direct experience of working in multinational or national oil companies, either as staff or as consultants. The technical course content therefore remains fresh and the experience of the course tutors is up to date.



## Reservoir Series continued

### Existing courses

Basic Geoscience  
Introduction to Geophysics  
Geological Application of Well Logs  
Openhole Petrophysical Interpretation  
Core Description  
Production Geology  
Applied Production Geology  
Reservoir Model Design  
Fractured Reservoir Characterisation  
Geology for Drilling Engineers  
Reservoir Engineering  
Applied Reservoir Engineering  
Well Test Design & Analysis  
Logging While Drilling  
Basin Analysis  
Geomechanics  
Structural Models in Seismic Data

### People

The tutor group of over 20 experienced staff members and close associates work from TRACS offices in Aberdeen and London.

### Series Focal Point



**Mark Cook** BSc, MBA

**Main Series tutoring:** Early Development, Business & Risk, Reservoir Engineering

**Industry experience:** 40 years, reservoir engineering, economics and risk analysis

**Career background:** Shell, AGR and TRACS

**Personal:** AGR (VP), TRACS (Director), Author, "Hydrocarbon Exploration and Production" (Elsevier 2008), 'Petroleum Economics and Risk Analysis' (Elsevier 2021), SPE distinguished lecturer on Risk Analysis